



.....
F a b u l o u s S e r i e s
.....

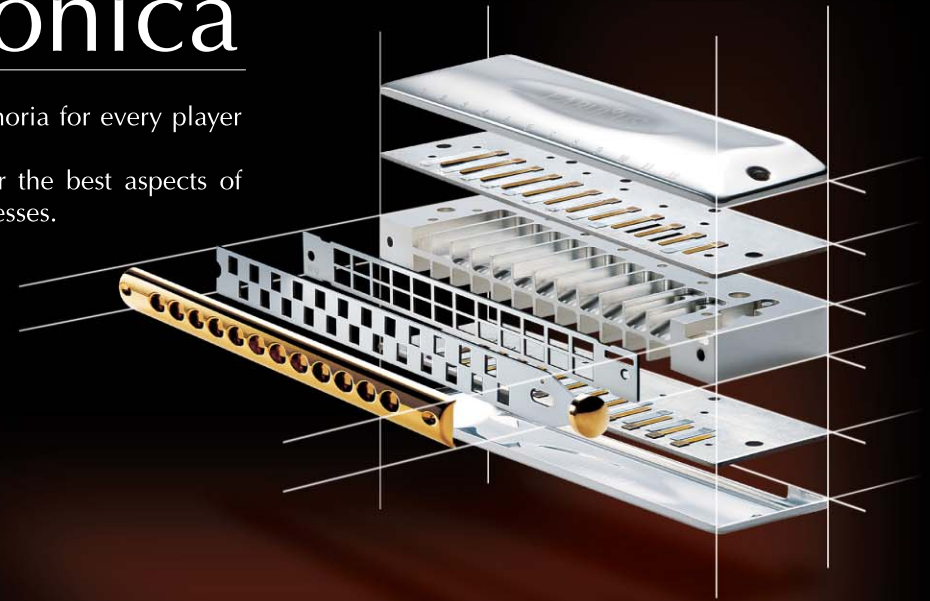
Chromatic & 10Hole Diatonic Harmonicas



Fabulous Chromatic Harmonica

Superb airtightness and instant response of the reeds to every breath creates a feeling of euphoria for every player when they first try Suzuki's all-new Fabulous Chromatic Harmonica.

The rich timbre of the Fabulous is a result of 21st century design matched with respect for the best aspects of tradition, embodied in top-quality components manufactured with Suzuki's high accuracy processes.



■ **Each Solid Brass body** takes a whole day to make using the high-precision spark-erosion process, ensuring absolute accuracy for perfect airtightness. The rigidity and solid mass of the brass improves reed response, (especially at the bass end) and the upper-octave chambers are specially contoured to give unbelievable response in the high range. Lastly, silver plating imparts a smooth luxury finish for great looks and a pure bell-like sound.



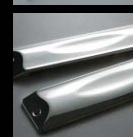
■ **The Long-Life Phosphor-Bronze Reeds** for the Fabulous were designed from scratch to suit the brass body's special qualities, giving the player optimum volume, tone and response. Suzuki meticulously studied the length and form of each single reed to maximize its performance and robustness.



■ **A Straight-alignment Slide** is used for the 12-hole model and **Cross-alignment Slide** is used for the 16-hole. The inside of the **Gold-Plated Mouthpiece** (a critically important area for airtightness) is hand-finished on each Fabulous Chromatic. Gold plating gives a smooth feel to the lips and a beautiful, luxurious appearance. The precision-made slide is specially designed for smooth, quiet movement and incredible airtightness.



■ **Extra Thick Reedplates** are used in the Fabulous to match the superlative tonal qualities of the brass body. Thick reedplates increase stability and give enhanced response to each reed. The extra rigidity of the thick reedplates allows a perfectly flat finish that adheres firmly to the body, to ensure maximum airtightness. All this adds up to feather-light reed response and a luxuriant, rich tone.

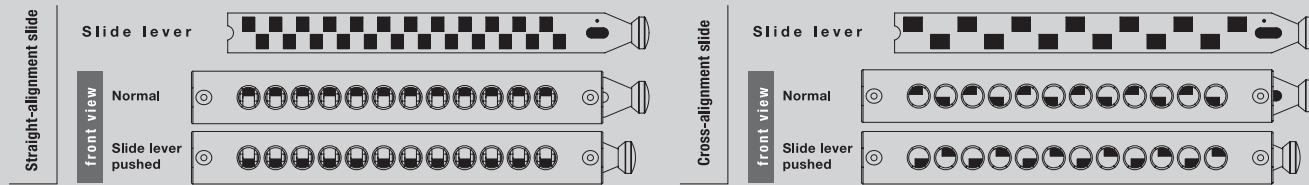


■ **Silver-plated Coverplates** finish off the elegant appearance of the Fabulous. But they are practical too, as silver-plating is well known to give optimum lubrication in the mouth, ensuring players lips don't stick while performing extended passages. Suzuki's all-new artistic design for the coverplates is also comfortable and secure to hold.

F-48S:12-Hole Chromatic with Straight-alignment slide F-64C:16 Hole Chromatic with Cross-alignment slide

To meet players demands for slide accuracy and speed, Suzuki designed an all-new straight-alignment slide and mouthpiece for the 12-hole model. The straight-alignment slide, with its short push stroke, gives a fast sliding action and warm tone, making it perfect for jazz and classical music.

A cross-alignment slide is used for the 16-hole model, as its larger holes improve airflow to make the bass range sound more efficiently.



Fabulous Chromatic Harmonica

■ 16-hole Chromatic Harmonica

F-64C

Range : 16-hole, 64 notes (c to d⁴)
sliding chromatic
Slide alignment : cross
Material : Body/cover :Brass with silver plating
Reed plate :Brass
Reed :Phosphor bronze
Dimension : 197×45×33mm
Weight : 760g
Accessory : leather case



■ 12-hole Chromatic Harmonica

F-48S

Range : 12-hole, 48 notes (c¹ to d⁴)
sliding chromatic
Slide alignment : straight
Material : Body/cover :Brass with silver plating
Reed plate :Brass
Reed :Phosphor bronze
Dimension : 160×45×33mm
Weight : 655g
Accessory : leather case



•An individual Serial Number is imprinted on the top of each harmonica body as proof of top quality and hand-finishing. It is imprinted after several inspections and a final strict quality test.

*F-48C (Cross-alignment slide) will be available soon.

Suzuki Chromatic Harmonica standard model

■ 12-hole chromatic harmonica

SCX-48

Range : 12-hole, 48 notes (c¹ to d⁴) sliding chromatic
Material : Body :Plastic
 Cover :Brass with chrome plating
Dimension : 155×45×30mm
Weight : 202g
Accessory : plastic case



Fabulous 10 Hole Diatonic

Now Suzuki brings the same exacting design philosophy and advanced manufacturing processes as used in the Fabulous chromatics to the popular 10 Hole Diatonic Harmonica. Also called the Fabulous, the new model's warm tone and amazing reed response come from an uncompromising commitment to achieving perfection, through the use of specially designed top-quality components.



■ Silver-plated Brass Body

The brass body's rigidity and heavy mass fully transmit the reeds vibrations to create a clear, full tone. The weight of the brass and the smooth finish of the silver-plating maximize volume as well.



■ **The All-new Long Profile Phosphor Bronze Reeds**, designed exclusively for the Fabulous diatonics, produce a more powerful and dynamic sound. From the quietest whisper to an all-out blues wail, these new high-performance reeds give the player instantaneous and delicately nuanced response, along with Suzuki's legendary long reed-life.

■ Suzuki has specially designed the reeds of the Fabulous to make Overblows and Overdraws easy to play, smooth-sounding and stable. Previously, players had to endure long waiting times for hand-customized harmonicas suitable for over-blowing. Now Suzuki has employed all its exacting design and manufacturing skills to create a superlative overblow harmonica, which will satisfy the demands of players who use this increasingly popular technique.

The Fabulous Diatonic comes in 'Equal Temperament' and 'Just Temperament'

F-20E | The F-20E is tuned in Equal Temperament, similar to most other Suzuki 10-hole Harmonicas. Equal Temperament is best for overblowers and other players who want to modulate keys in a jazzy style.

F-20J | This model is tuned in Just Temperament for producing rich and beautiful chords. Just Temperament tuning is an older way of tuning harmonicas, and traditional blues players still prefer this sound.

The F-20J is specially tuned for 2nd position Blues chording. (e.g. F-20J C key is tuned for 2nd position Just Temperament tuning playing in G)

Fabulous 10 hole Diatonic

■ 10 hole Diatonic

F-20E

Equal Temperament

Range : 10 holes, 20 notes
 Keys : All 12 major keys, plus high G and Low F
 Material : Body /Cover-plates : brass with silver plating
 Reed plate : brass
 Reeds : Phosphor bronze
 Dimension : 100×27×20mm
 Weight : 157g
 Accessory : plastic case



■ 10 hole Diatonic

F-20J

Just Temperament

Range : 10 holes, 20 notes
 Keys : All 12 major keys, plus high G and Low F
 Material : Body /Cover-plates : brass with silver plating
 Reed plate : brass
 Reeds : Phosphor bronze
 Dimension : 100×27×20mm
 Weight : 157g
 Accessory : plastic case



Suzuki 10-hole Wooden Harmonicas

■ 10 hole Diatonic

PURE HARP
MR-550

Range : 10-hole, 20 notes
 Keys : All 12 major keys, plus high G and Low F
 Material : Body /Cover-plates: Rosewood
 Dimension : 100×27×21mm
 Weight : 85g
 Accessory : plastic case



■ 10 hole Diatonic

Fire Breath
MR-500

Range : 10-hole, 20 notes
 Keys : All 12 major keys, plus high G and Low F
 Material : Body: Rosewood Cover-plates: black-lacquered brass
 Dimension : 100×27×20mm
 Weight : 70g
 Accessory : plastic case





 **SUZUKI**
www.suzuki-music.co.jp

SUZUKI MUSICAL INST. MFG. CO.,LTD.
Hamamatsu, Japan

SUZUKI reserves the right to change prices, specifications, designs, and models, and to discontinue products without notice and without liability. Due to photographic and printing limitations, the illustrations shown here may differ from the actual color and grain.

We have acquired the certificates of
ISO9001 and ISO14001.

PRINTED IN JAPAN 8008-5B-RM-HA-025-A

For details please contact: